



CERTIFICATION
 RPS Australia East Pty Ltd (ACN 140 292 762) certifies that the locations, surface and invert levels of the stormwater drainage infrastructure shown on this plan have been surveyed in accordance with the Surveying Act 2002 and the Surveying Regulation 2002. Manual and/or automatic methods may have been used. The plan is subject to the important Note below, and the relevant Delegation of Authority.

AUTHORISED DELEGATE

- IMPORTANT NOTE**
- This plan was prepared for the sole purposes of the client for the specific purpose of recording the infrastructure for the Cairns Regional Council. This plan is strictly limited to the Purpose and does not apply directly or indirectly and will not be used for any other application, purpose, use or matter. The plan is presented without the assumption of a duty of care to any other person (other than the Client) ("Third Party") and may not be relied on by Third Party.
 - RPS Australia East Pty Ltd will not be liable (in negligence or otherwise) for any direct or indirect loss, damage, liability or claim arising out of or incidental to:
 - Third Party publishing, using or relying on the plan;
 - RPS Australia East Pty Ltd relying on information provided to it by the Client or a Third Party where the information is incorrect, incomplete, inaccurate, out-of-date or unrepresentative;
 - any inaccuracies or other faults with information or data sourced from a Third Party;
 - RPS Australia East Pty Ltd relying on surface indicators that are incorrect or inaccurate;
 - the Client or any Third Party not verifying information in this plan where recommended by RPS Australia East Pty Ltd;
 - lodgement of this plan with any local authority against the recommendation of RPS Australia East Pty Ltd;
 - the accuracy, reliability, suitability or completeness of any approximations or estimates made or referred to by RPS Australia East Pty Ltd in this plan.
 - Without limiting paragraph 1 or 2 above, this plan may not be copied, distributed, or reproduced by any process unless this note is clearly displayed on the plan.
 - Scale shown is correct for the original plan and any copies of this plan should be verified by checking against the bar scale.
 - Size and type of stormwater pipes have been obtained from information from constructing contractor and have not been verified. All pipes are round concrete unless shown otherwise. Other information has been obtained from design and construction information [provided by Third Parties] and should be checked before use.
 - The positions of some services shown on this plan have been exaggerated for drawing clarity purposes. Dimensions shown take precedence over scaled position.

LEGEND

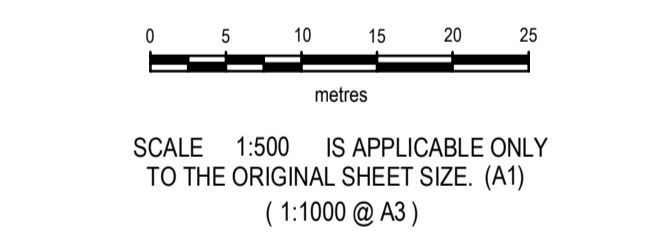
Drainage Pipe U/G	-----
Road Crown	-----
Sub-surface Drain
Flushing Point	o I.O.
Top of Bank	-----
Toe of Bank	-----
Edge of Rock	-----

NOTES

Level Datum: AHD
 Origin of Levels: PSM 101497
 RL 42.639

Meridian: GDA94 MGA Zone 55 (Plane)
 Vide GNSS

Origin of Coordinates: PSM 101497
 E 363,782.962
 N 8,118,514.519



PROJECT MANAGER A KERLIN	SURVEYED CF/NB Apr 2018
COMPILED AMK	CAD REF
SHEET SIZE A1	PR135576-20.DWG PR135576 Overall.mjo XR PR135576-17.DWG

RPS RPS Australia East Pty Ltd
 ACN 140 292 762
 135 Abbott St
 PO Box 1949
 CAIRNS QLD 4870

© COPYRIGHT PROTECTS THIS PLAN. Unauthorised reproduction or amendment not permitted. Please contact the author.

T +61 7 4031 1336
 F +61 7 4031 2942
 W rpsgroup.com.au

FGF DEVELOPMENTS PTY LTD

CHERRYBROOK STAGES 1C, 2 & 3 AS-CONSTRUCTED DRAINAGE

SCALE 1:500	DATE 26/4/2018	DRAWING NO. PR135576-20	ISSUE
----------------	-------------------	----------------------------	-------

R:\IT\2018\20180514_14_04\02_04_2018\1310_1310_NABF.dwg - 13101310.dwg (13101310.dwg)