



Facade image may depict features such as land, landscaping, timber decking, furniture, window treatments and lighting which are not included in the package price or which are not available from Coral Homes.

\$386,318* FIXED PRICE

RIVERPARKS Lot 1121 Crabapple Court, Upper Caboolture



Home Size: 185.72m² | Lot Size: 400.00m² | 12.50m x 32.00m Lot

MONTROSE 20 MKII DESIGNER

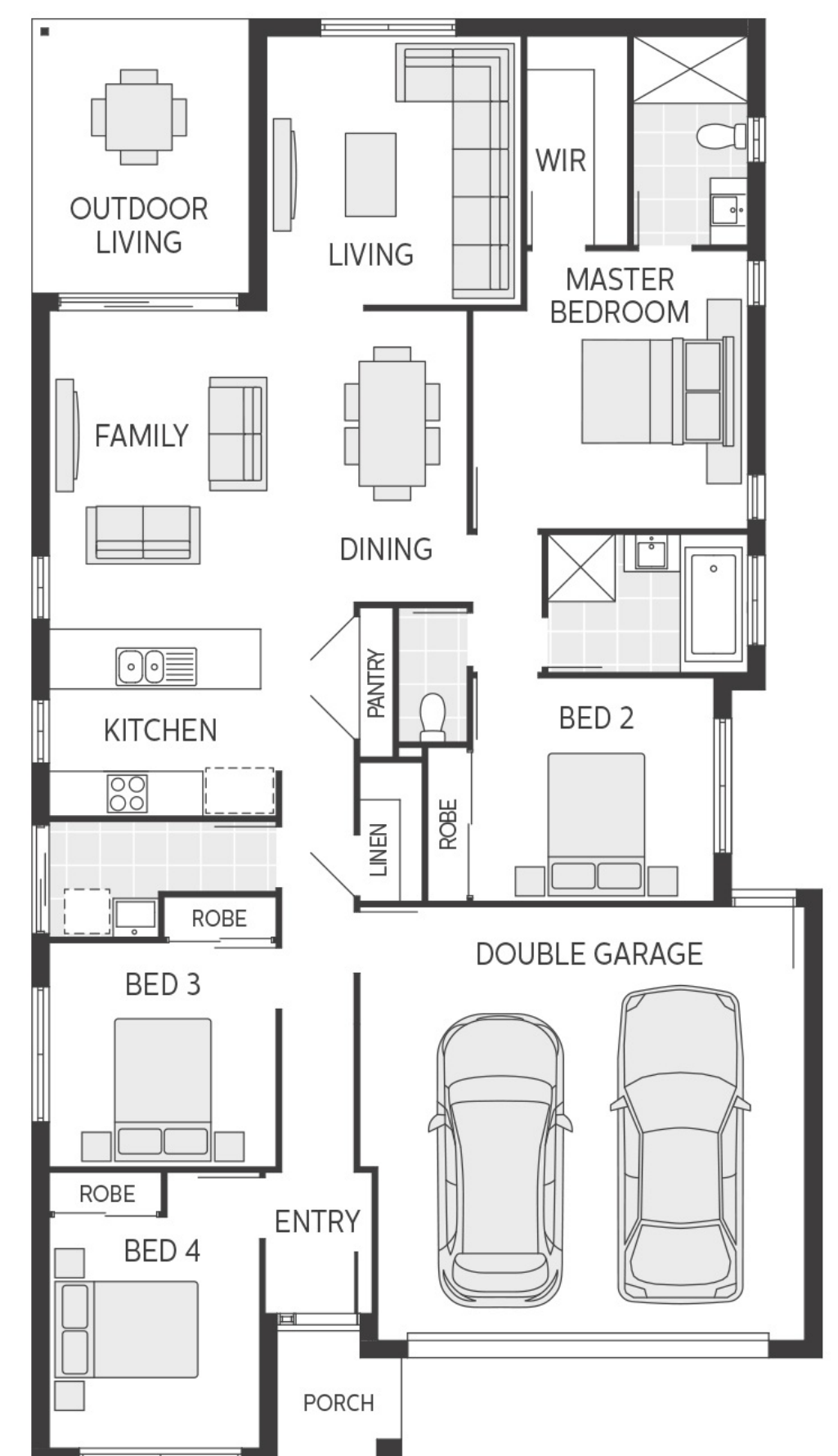
FACADE

HOME AND LAND PACKAGE INCLUSIONS:

- ✓ Facade as shown
- ✓ Carpet and tiling
- ✓ Fixed price site works
- ✓ Exposed aggregate driveway and path to entry
- ✓ NBN/Fibre optic lead in
- ✓ Integrated slab to outdoor living area (tiling not included)
- ✓ Basic landscaping with letterbox
- ✓ Flyscreens to windows and sliding doors
- ✓ Roller blinds
- ✓ TV antenna
- ✓ Ceiling fans to bedrooms
- ✓ Wall mounted clothesline
- ✓ Stained timber feature front entry door
- ✓ Termite resistant structural timber framing
- ✓ Panelift automatic garage door with 3 remotes
- ✓ myChoice® selection showroom consultation^[^]



FOR MORE INFORMATION
Meaghan Buckley | Coral Homes Sales Consultant
m.buckley@coralhomes.com.au
P: 0420 889 860 | M: 0420 889 860
34 Attenborough Circuit, North Lakes, QLD



Floor plan is indicative only, conceptual in nature and subject to change. Floor plan may depict fixtures, fittings, features, finishes, inclusions, furnishings, vehicles and/or other products which are not included in the house design, not included in the package price and/or not available from Coral Homes¹.

¹Price shown is based on Coral Homes' 23-07-18 price list. Land price and availability is subject to change at any time and without notice. Land price at the time of printing is \$188,000. Price shown does not include additional amounts payable in respect of variations to the house design requested by the buyer. House siting is to be determined by Coral Homes. Plan is subject to approval by the Principal Developer and Local Authorities. Coral Homes reserves the right to withdraw this package at any time without notice. QBCC 50792/1014053, OFT NSW 62084C, BLD260339.